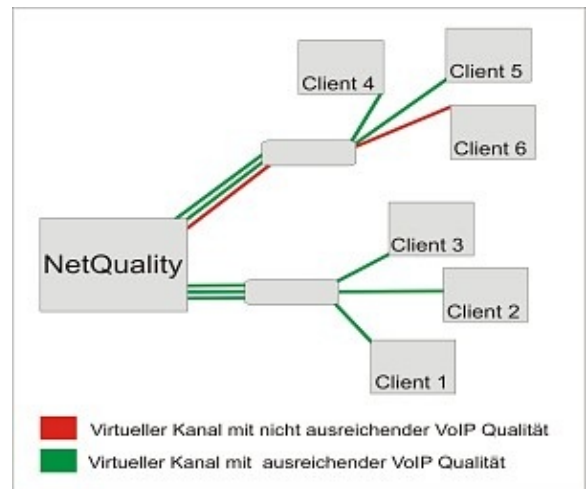


NetQuality

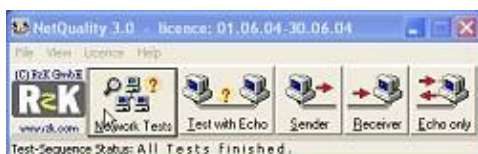
VoIP-specific Network Readiness Assessment and Troubleshooting



- completely automatic search for testpartners
- fast network testing by simulating RTP traffic over ICMP without having to install or start any client software
- accomplishes pseudocalls with real effects on the net
- detects delay, jitter, loss, max. gap
- included webserver to download UDP echoclient-software f
- adjustable profiles (G.711, G.729...)
- global broadcast rating of LAN
- Result: malingered conversations lead to real data on the net
- Reports as TXT, Html, SQL
- detailed graphics for packet loss, delay and jitter

Installing NetQuality and using the included Webserver to distribute the client-software

Install NetQuality on a PC System using the network and start it. NetQuality includes a webserver, which can be used to download a test-client. The program uses the testclients to do pseudocalls and records the delay, jitter,losts an max.gap.



On the left you can see the main menu. Except the described network tests NetQuality can also be used to analyze several connections in detail.

The real netload is ascertained by using pseudocalls

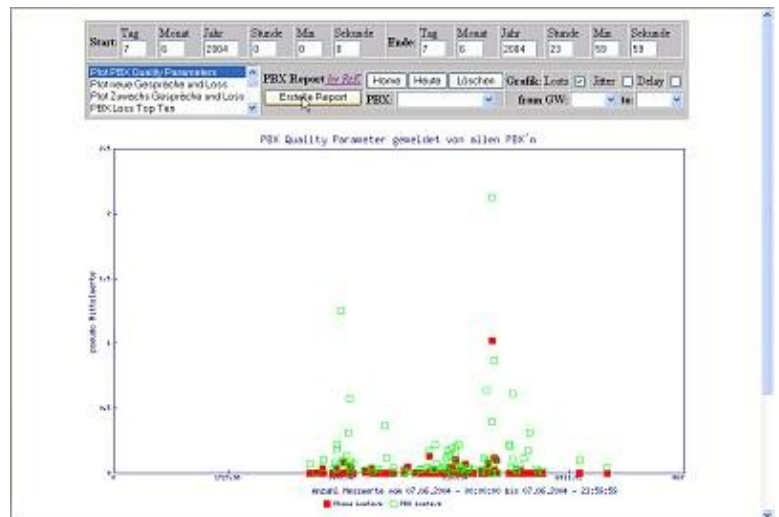
The result of one or more test runs contains the average and max. delay, jitter and the actual loss if packets were lost. The pseudo-loss means the loss that occurs, because the Real-Time-Protokoll (RTP) would drop packets when the jitter is too high. Additionally the packet-loss produced by a high broadcast load in the network is calculated. This value depends on the capability of the ip-phone hardware.

Address	Test-Type	Start	End	Result	Loss %	Pseudo Loss %	Avg Delay	Max Delay	Avg Jitter	Max. Min	Max. Max (ms)	Broadc. Avg./sec	%Lost **
194.127.156.133	IP2000	18:22:28	18:22:53	Completed	0,0%	0,0%	78	71	0	0	0	0,0%	
194.127.156.133	IP2000	18:22:54	18:23:19	Completed	0,0%	0,0%	7	3	0	0	0	0,0%	
194.127.156.232	IP2000	18:23:19	18:23:44	Completed	0,0%	0,0%	122	30	60	0	0	0,0%	
82.138.216.225	IP2000	18:23:44	18:24:09	Completed	0,0%	0,0%	7	3	0	0	0	0,0%	
82.138.216.250	IP2000	18:24:10	18:24:35	Completed	0,0%	0,0%	3	4	0	0	0	0,0%	
IP20000303-c082	IP2000	18:24:35	18:25:07	Completed	0,0%	0,0%	10	0	30	0	0	0,0%	
IP20000308-e082	IP2000	18:25:07	18:25:36	Completed	0,0%	0,0%	19	7	0	1	0	0,0%	
IP20000309-e082	IP2000	18:25:39	18:26:10	Completed	0,0%	0,0%	11	5	30	0	0	0,0%	
IP20000309-3e82	IP2000	18:26:11	18:26:42	Completed	0,0%	0,0%	16	5	30	0	0	0,0%	
IP20000309-4e82	IP2000	18:26:42	18:27:14	Completed	0,0%	0,0%	15	9	0	0	0	0,0%	
IP2000030e-d082	IP2000	18:27:14	18:27:46	Completed	0,0%	0,0%	16	10	0	1	0	0,0%	
IP2000030e-7e82	IP2000	18:27:46	18:28:18	Completed	0,0%	0,0%	15	9	0	1	0	0,0%	
IP2000030e-w082	IP2000	18:28:18	18:28:50	Completed	0,0%	0,0%	11	5	0	0	0	0,0%	
IP2000030e-x082	IP2000	18:28:50	18:29:22	Completed	0,0%	0,0%	12	6	0	1	0	0,0%	
IP4000001-5282	IP4000	18:29:22	18:29:54	Completed	0,0%	0,0%	35	23	0	0	0	0,0%	
IP4000001-5382	IP4000	18:29:54	18:30:26	Completed	0,0%	0,0%	15	0	30	0	0	0,0%	
IP4000001-5d82	IP4000	18:30:26	18:30:58	Completed	0,0%	0,0%	16	9	0	1	0	0,0%	
FAMN-N1194.12	IP2000	18:30:58	18:31:30	Completed	0,0%	0,0%	1	1	0	0	0	0,0%	
SEWNET194.127	IP2000	18:31:30	18:32:06	Completed	0,0%	0,0%	4	2	0	0	0	0,0%	
TRESOR194.127	IP2000	18:31:56	18:32:21	Completed	0,0%	0,0%	4	2	0	0	0	0,0%	
20/20 Tests					0,0 %	0,2 %	10,3	21,7	11,4	11,4	9,0 msec	0,3	0,0

A database of the test runs

The data of several test runs can be viewed under various points. It is favourable to view the data of a moment when problems have appeared and take a look at the details and the stations involved. You can find a graphic of a network that "managed" the test:


The graphic on the right shows the intraday of talks that had a max. packet loss of 2%. Only two talks got a packet loss over 1%. The rest of them are clearly under 0,5%.



But who wants to look into the future? Only by repeated measurements you can recognize trends. Therefore you should run repeated measurements and keep track of them.

Network errors and others problems can be analyzed and isolated with our software products NetControl and NetReport.

NetQuality:

- Download NetQuality
-  PDF product sheet

For more information on NetQuality VoiP, please contact us: info@rzk.com